



*Solar Mounting Systems*

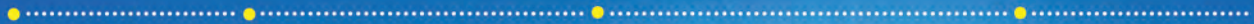
# SOLAR CARPORTS

DESIGN

ENGINEERING

MANUFACTURING

INSTALLATION

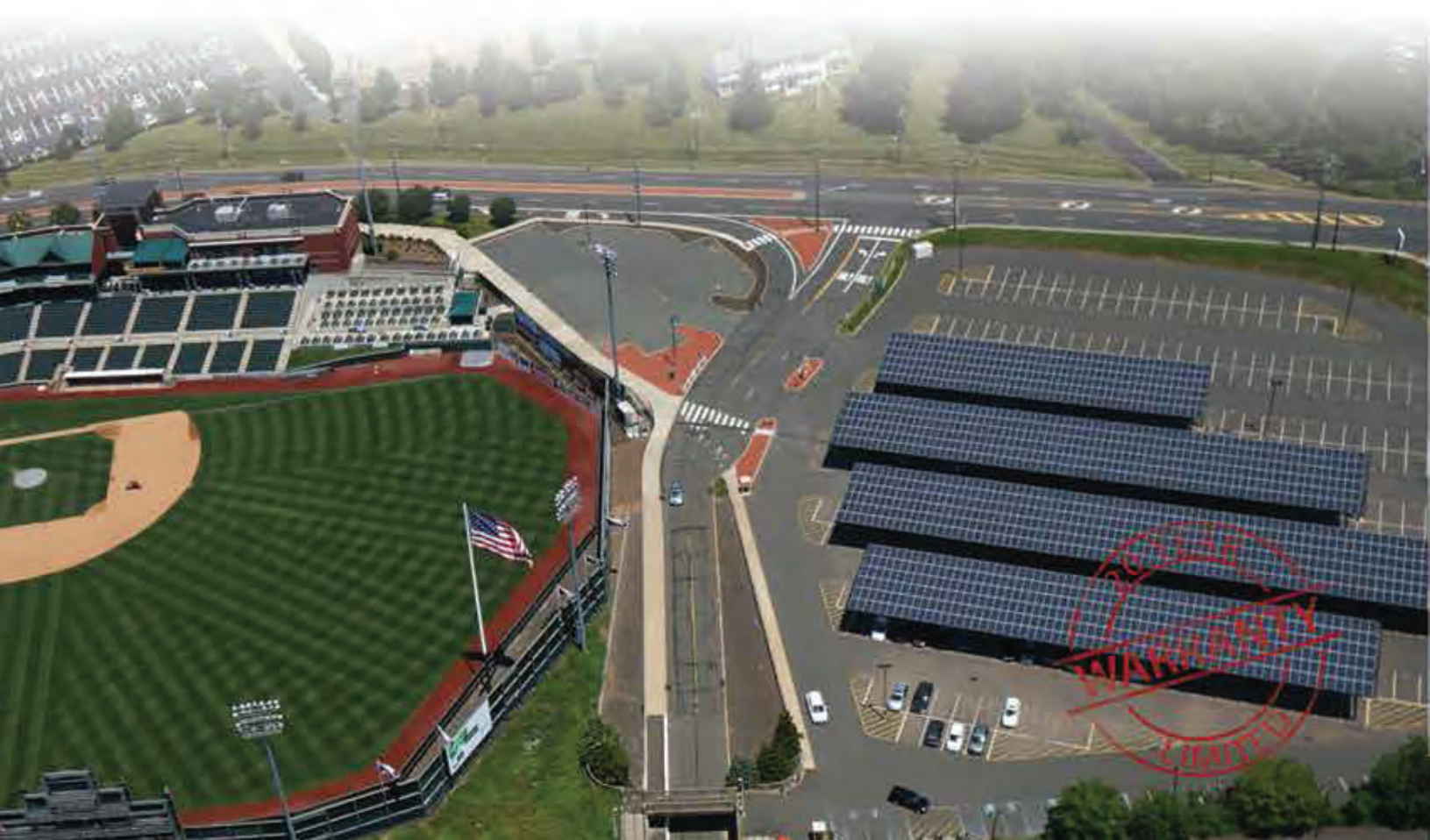


[www.rbisolar.com](http://www.rbisolar.com)

**RBI Solar designs, engineers, manufactures and installs solar mounting systems. This single-source responsibility is focused on delivering value throughout the solar value chain.**

## **Features & Benefits**

- Standard installations maintain 8'-6" minimum clearance, higher elevations available
- Optimized span between posts
- Custom design available
- Designed with applicable codes and loading considerations
- Foundation and installation options available
- Readily tailored to fit different modules and parking lots
- Custom colors and optional raised concrete piers are available
- Industry-leading 20-year warranty on all of our carport installations
- Water control with decking available
- No field welding, drilling or other on-site fabrication needed
- Multiple coatings options:
  - Hot dipped galvanized
  - Epoxy coated



## RBI Solar Background

Family owned and operated, we pride ourselves in 80+ years of experience in commercial design-build specialty structures. RBI Solar's unique design capabilities and multiple manufacturing facilities help us develop the most economical, reliable and robust solutions for any structural solar mounting challenge. We are committed to taking single-point responsibility for the entire project starting from the initial design to complete installation of solar modules.

## Solar Carport Structure Types

### Single Slope

Single slope structures are installed sloping toward the southern exposure to optimize solar production.



### Double Slope

Gable, double-sloping structures are typically installed in a north/south orientation with panels sloping 5° east and west.



### Inverted Design

The inverted design provides increased clearance at the eaves while promoting snow to shed toward the center column of the structure.



### Full Coverage

The full coverage design is utilized to cover whole parking area including the drive aisles between the parking rows. Typical applications are parking garages, drive-throughs and bus loading and unloading zones.



## RBI Solar Installs Solar Canopies

At RBI Solar, we understand that solar carport project development can stretch out over a number of years, which is why our commitment to customers extends from project conception to completion. We take single-source responsibility to complete your solar racking installation project including foundations. With in-house project management and installation crews, this approach reduces duplication of efforts throughout the enterprise, and focuses on delivering projects on time and within budget.



## SINGLE SOURCE PROVIDER



### DESIGN

RBI Solar provides complete structural and foundation design. Our focus is to deliver the most effective and efficient racking solution based upon the array layout and site conditions.

### ENGINEERING

Our in-house engineers incorporate and analyze data from available certified geotechnical reports, on-site pile testing, all applicable codes and loading considerations when designing the most cost-effective structures.

### MANUFACTURING

Multiple state-of-the-art manufacturing facilities, along with a vertically integrated procurement and manufacturing protocol, ensure overall quality of product with reduced lead times for material.

### INSTALLATION

Single source responsibility, with in-house project management and installation crews. This approach reduces duplication of efforts throughout the enterprise, focused on delivering projects on time and within budget.

**GROUND MOUNT • ROOF MOUNT • CARPORTS • LANDFILL**

**Racking questions? We are here to answer.  
Contact us at [info@rbisolar.com](mailto:info@rbisolar.com) or call (513)242-2051**